



Cuerno Verde and Pioneer Trails Districts Snow Show

Where: Rocky Mountain High Adventure Base, Poncha Springs, CO

Date: Fri – Sun February 19-21, 2010

Time: Check in Friday 4-8 pm, check out Sunday 10 am

Cost: \$4 per person if register by February 5, \$5 after that.
\$8 covers all adults in the Troop; however each adult must bring a can of soup. See Below.

Includes: Each person must bring a can of beef or chicken based soup. They will be mixed together for a campwide lunch for all attending. **Note: Drinks will not be provided**

Prizes: Prizes (not ribbons) will be awarded for each event.
Attending Troops will receive a custom participation ribbon.

Events will start at 9am Saturday.

Camping is encouraged, but not required. Bring your own water.

Events will include the snow snake and each patrol will need a Klondike Derby style sled that will be pulled by the patrol dog team (scouts). Web sites with plans are listed below. The sled must be at least 5 feet long and 33 inches high at the back.

Directions to the High Adventure Base: From Pueblo CO, follow US Hwy 50 west to Poncha Springs. Turn left (south) on to US 285 South. Go approximately 6 miles, turn right (west) into camp off US 285 (there will be a Boy Scouts sign on the west side of the highway).

Any questions; Contact Forrest Borre 784-2246

Events

We will need help running the events. This would be a great idea for your SPL and/or Senior Patrol.

- * **Fairbanks Snow Snake:** See directions below, you can use the snow snake you made last year.
- * **Sitka Snow Sculpture:** Build a snow sculpture with a Boy Scouting theme.
- * **Fort Yukon Injured Scout:** Scouts must figure out what condition has stricken a teammate and provide correct treatment, while the teammate can only give them hints on his fake condition, without actually naming it.
- * **Ketchikan Out-of-Reach First-Aid Kit:** A first-aid kit lies just 10 feet away, but you can't walk over to it. Instead, patrols must use pioneering skills to create a device to retrieve the kit.
- * **Seward Don't-Spill-the-Serum Race:** You need to get a cup of medicine to your camp. You will have to put it on your sled and pull the sled to your camp and avoid losing as much as possible.
- * **Anchorage Sled Race:** This will be a mass start over a challenging course. Your patrol will need to pull your sled, loaded with all things brought for the day's events. Web sites with plans are listed below. The sled must be at least 5 feet long and 33 inches high at the back.
- * **Prudhoe Bay Ice out Flood:** It is spring and an ice jam has just broken, the backed up river is now flooding. Patrols have seven minutes to secure their sleds at least as high as their shortest Scout.
- * **North Pole Claim Jumpers:** You will need to know basic Boy Scout information.
- * **Juneau Campfire Skit:** Each patrol will be given a box containing identical contents, and a list of things that you brought with that may be added plus any items (besides money) the boys have in their pockets. You will need to create a commercial using these items.

Things You Will Need for the Events

(These items must be carried on your sled at all time, including the sled race)

- Sled
- Snow snake
- Rope
- Scout handbook
- Blanket
- Folding knife
- Quart or liter of water
- First Aid kit

Schedule

FRIDAY-February 19, 2010

4:00 - 8:00 p.m.	Arrival & Check-in
8:30 p.m.	Senior Patrol / Adult Leader Meeting
11:00 p.m.	Taps

SATURDAY-February 20, 2010

8:00 a.m. – 8:30 a.m.	Late Registration
8:45 a.m.	Opening Ceremony and Flag Raising (Flag Poles)
9:00 a.m. – 11:30 a.m.	Morning Events
11:45 a.m. - 1:00 p.m.	Lunch & Cleanup
1:00 p.m. - 4:00 p.m.	Afternoon Competitions
4:15 p.m.	Sled Race
8:00 p.m.	Campfire
11:00 p.m.	Lights out

SUNDAY-February 21, 2010

6:00 a.m.	Wake up, Breakfast, and Cleanup
10:00 a.m.	Pack up gear, break camp, clean up campsite, check out and depart for home

You will need to take home:

Everything you brought. Includes event, lunch materials and, wrappers from prizes.

You will need to bring:

Bowls, silverware, napkins, cups etc for eating lunch. These things will not be provided.

Lunch on Saturday will be the soup you bring for registration mixed together and served to the camp. All other meals will be cooked by your troop in your campsite.

Dress for the weather: Attendees not dressed appropriately, adults included, will be sent home. Klondike staff will determine what is “appropriate” and it is not negotiable. Unit leaders are responsible for informing all participants and attendees of this rule. The dining hall will not be open, except to use bathrooms, and all participants and spectators will outside, all day.

Boots: We expect deep snow. Weather appropriate footwear is a must. Spectators and participants must be dressed appropriately or we will have to ask you to leave.

Winter Coat and Pants: Expect it to be cold and snowy. Ski or snowmobile pants, if you have them, are suggested.

Pants: Wool or 2 layers with the outer being a quick drying synthetic are best. Ski or snow pants are suggested.

Hat: Must be able to cover the ears.

Mittens/Gloves: Two (2) pair per scout, wears one, one for backup.

Socks: Two extra pair per scout.

Preparing for the Snow Show

- 1) Each patrol will need a sled. The following three web sites contain examples of plans you could use:

<http://media.scouting.org/boyslife/workshop/sledplans.pdf>

http://scoutdocs.ca/Klondike/Klondike_sled_plans.php

<http://www.scouters.us/homesle.html>

http://inquiry.net/images/C_of_buffalo_sled.gif

- 2) You will need to make a snow snake. One per patrol. You can use the one you made last year. See guidelines below.



Required: 8 foot long 2x2 or 2x4 board.
Sandpaper, paint, ski wax, lead.

Snow snakes are carved wooden staves slid across an icy stretch to see who can slide the farthest.

Build the Snow Snake: Each patrol or scout should create their own snow snake. The board should be sawn and sanded down so it is from 5 to 7 feet long with a 4 inch long head. The snake should be about 3/4 to 1 inch wide and 1/2 inch high for the length of the body. The head should be from 1 1/2 to 2 inches tall. Using a 2x2 furring strip as the blank works well, or rip cut a 2x4.

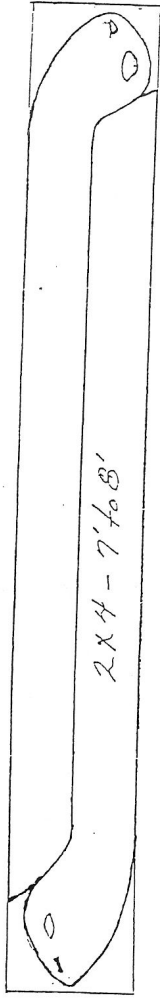
You can drill eyes in the head and fill with lead or a couple bolts for extra weight.

The underside of the snake is rounded and the back is flat. The bottom of the head should slope up like the front of a snow ski.

Each snake should be well sanded, especially the bottom. Then, painted and waxed for a smooth finish. (One scout created a beautiful one by wood burning and then varnishing and then waxing.)

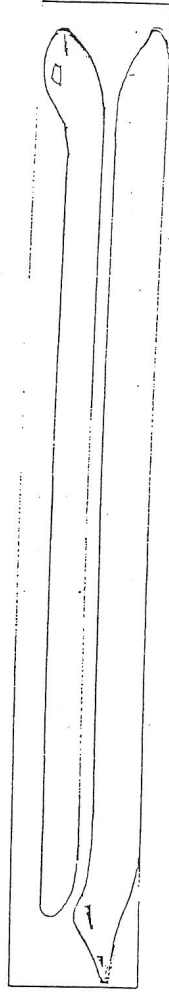
Throwing the Snakes: At the start of the course, a scout holds his snake by the tail with the head resting on the ground and gives it a big push much like a shuffleboard stick. Or, scouts can carry their snake and take a running start before launching it down the track

SNOW SNAKE

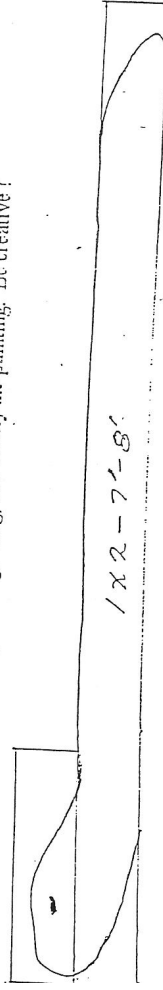


The making of the snow snake is a great troop activity, for the small cost of \$1.50 each.

Figure 2 hours from start to finish per snake. One 2x4 makes 2 snakes. Lay out the snakes head to tail with a paper pattern. Rough out the snakes with a saw, (adult leader



can help in the ripping of the long body). Once the snakes are roughed out, they can be detailed by carving, filing, and finally the painting. Be creative!



Snow Show Reservation Form

Registration fee .and must be paid to the **Pueblo Scout Service Center**. Fee is \$4 per scout if paid by February 5, \$5 if paid after February 5. \$8 covers all adults.

Reservation fees:

The unit will be responsible for paying for the number of attendees identified.

Early registration is encouraged.

Troop or Crew # _____
Patrol Name _____ ; **# of Scouts** _____
Patrol Name _____ ; **# of Scouts** _____
Patrol Name _____ ; **# of Scouts** _____
Patrol Name _____ ; **# of Scouts** _____

of Scouts _____ @ _____ each = _____

Adults attending _____ = **\$8.00**

Total registration fees due _____

Contact Person Name: _____

Phone: _____

E-Mail: _____

Address: _____

City: _____ State: _____ Zip: _____